

# Who goes where?

Where do people who spend their working lives considering good design choose to stay when they go on holiday? **Jennifer Goulding** asks 10 of them to reveal their favourite hotels

**JOHN MINSHAW** is an architectural designer. His practice, **John Minshaw Designs** (tel: 020-7486 5777, website: [www.johnminshawdesigns.com](http://www.johnminshawdesigns.com)) specialises in residential commissions

**FAVOURITE HOTEL** The promise of privacy and tranquillity attracted my wife and me to Evason Hideaway Ana Mandara, in Vietnam. It is accessible only by boat, so our first sight of the island's spectacular, tree-covered mountains, white beaches and megalithic boulders was breathtaking – the stress of travelling disappeared instantly. The beautifully designed traditional timber villas are scattered between the rocks, and the swimming pools have been cut and formed from boulders creating giant organic sculptures. The superb service and attention to detail make it the ultimate escape. **DESIGN TIP** At The Chedi Club in Bali, fresh laundry is wrapped in tissue paper, tied with silk ribbons and presented in lacquer boxes.

**TARA BERNERD** is an interior designer. She is the co-founder and chairman of design consultancy **Target Living** (tel: 020-7823 2316, website: [www.targetliving.com](http://www.targetliving.com))

**FAVOURITE HOTEL** Hôtel Costes in Paris is steeped in memories for me – I feel more affection for it than for the city itself. The moment you enter, the moody, sexy atmosphere engulfs you. It is filled with rich, heady scents, and decorated in velvet fabrics in warm, wintry colours. The bedrooms are small and intimate. The Moroccan suite is a beauty – like diving into a jewellery box. **DESIGN TIP** Soneva Fushi in the Maldives is an idyllic escape. You abandon your shoes on arrival, and get round the island on bicycle. The rooms are luxurious Robinson Crusoe style, with dark woods and linen, and each one has its own private beach garden.

**DAVID LINLEY** is a furniture designer and chairman of **Christie's UK** (tel: 020-7730 7300, website: [www.davidlinley.com](http://www.davidlinley.com))

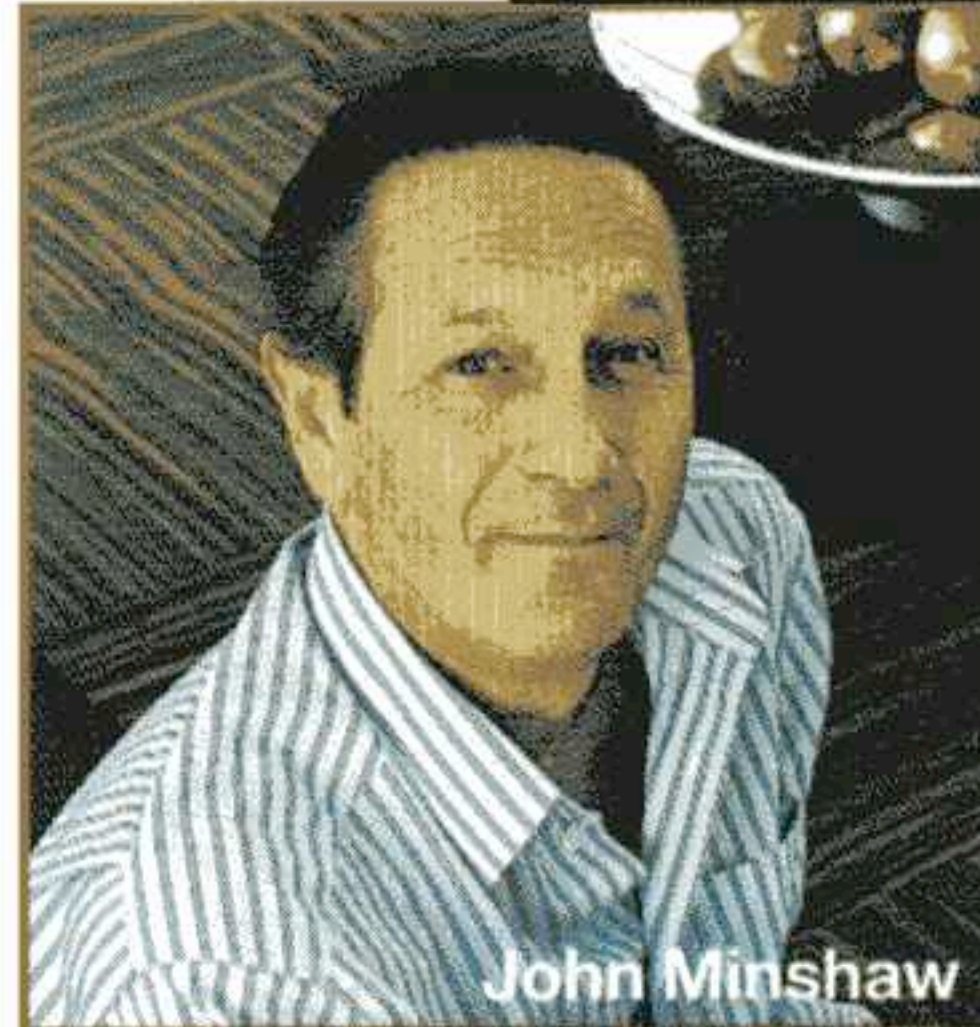
**FAVOURITE HOTEL** L'Hotel in Paris is the perfect short-break destination. My wife, Serena, and I love it. Each bedroom has a

completely different style inspired by a country such as Africa, China or Turkey, which is evoked with unique fabrics and *objets d'art*. All are theatrical. It was built in 1816 and, famously, it was where Oscar Wilde died – one of the rooms is inspired by his dining room. In addition, there is a Roman-style hammam and relaxation room built into the original stone vaults. **DESIGN TIP** A hotel room should create a sense of occasion; staying in it should be memorable. At Claridge's (where we have designed two suites, and are about to design nine more), we have achieved this through distinctive design, including brave use of colour. For example, in one dressing room we used a lipstick-red carpet and a mirror-glass dressing table, which reflects and enhances the intense colour.

**NICHOLAS COLERIDGE** is Managing Director of Condé Nast magazines. His latest novel is *A Much Married Man* (Orion, £6.99)

**FAVOURITE HOTEL** Some 120km south of Udaipur is a magical Indian Heritage Hotel, Udai Bilas Palace at Dungarpur – one of the few that hasn't been ruined by excess modernization. I love the lakeside situation, the floating temple, and the giant storks that pick their way through the shallows. The dining room is decorated with 100 stuffed, glass-eyed tiger and cheetah trophies, and the bedrooms have a dignified, shabby grandeur. **DESIGN TIP** The park-facing rooms at the 70-storey Mandarin Oriental in New York have deep windows and chaises longues, which make you feel as if you are floating in the air above the city while you read.

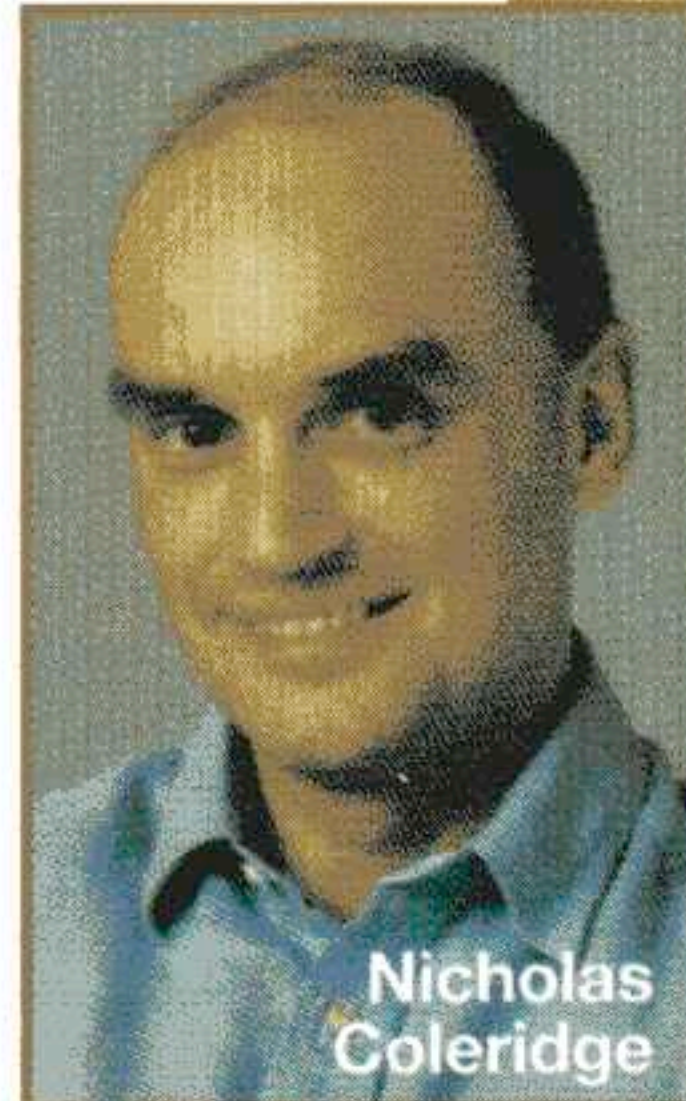
**ARABELLA LENNOX-BOYD** is a garden designer working in Britain, Europe and the States (tel: 020-7931 9995, website: [www.arabellalennoxboyd.com](http://www.arabellalennoxboyd.com)) ▷



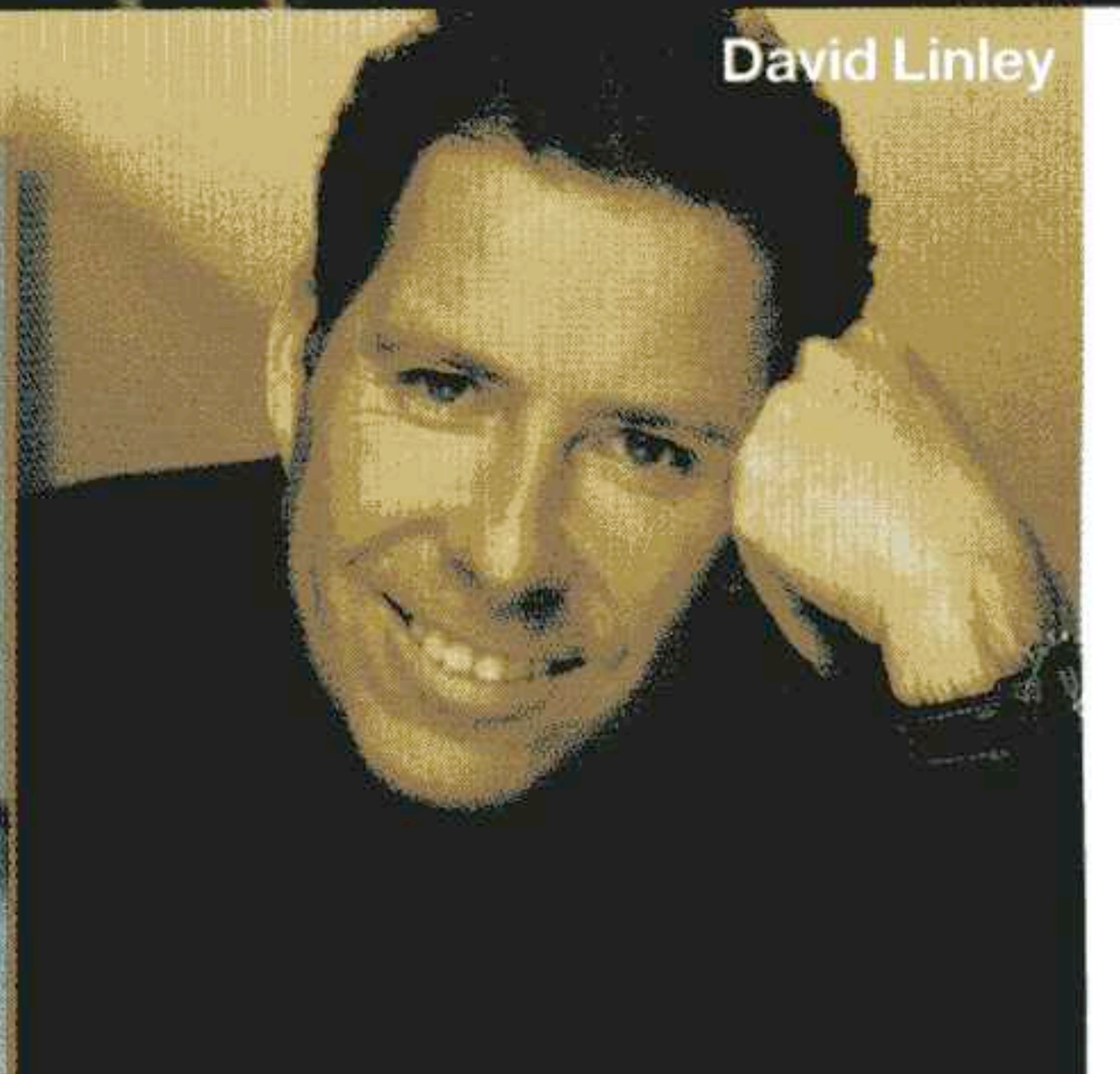
John Minshaw



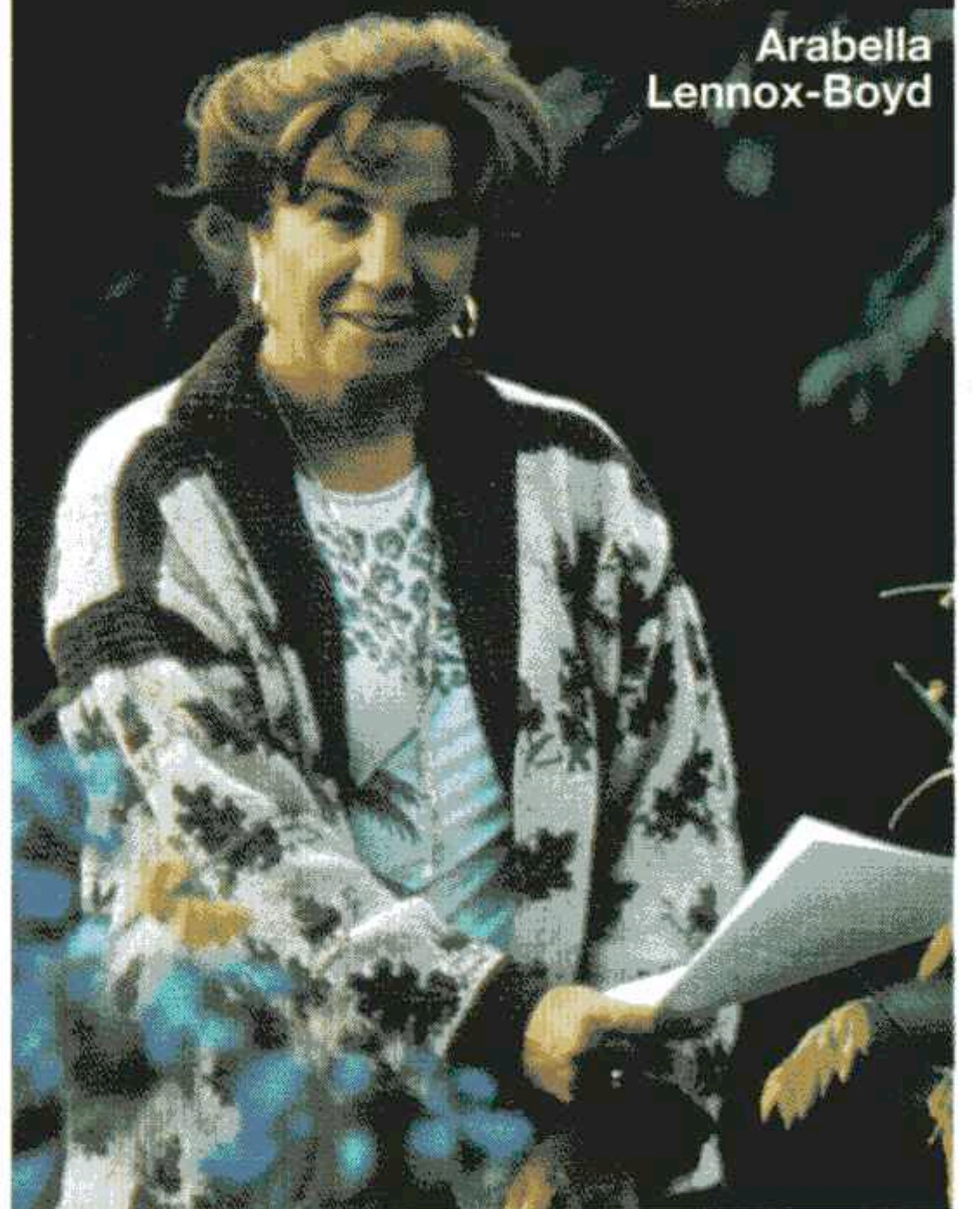
Tara Bernerd



Nicholas Coleridge



David Linley



Arabella Lennox-Boyd